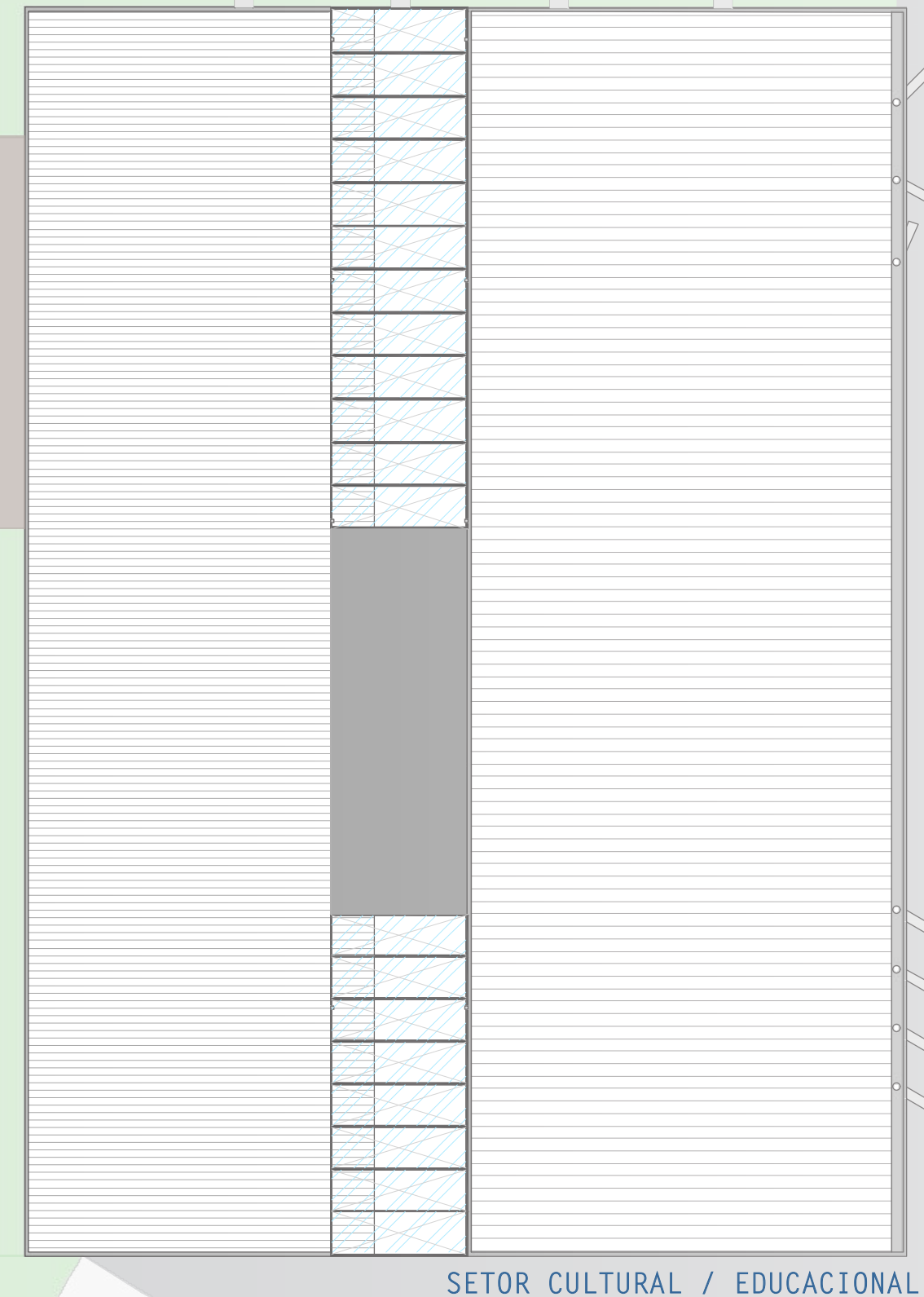


UNIDADE DE TRIAGEM

PROPOSTA DE PROJETO PARA COOPERATIVA DE RECOLHEDORES AUTONOMOS DE RESÍDUOS SÓLIDOS E MATERIAIS RECICLÁVEIS DE UBERABA, MINAS GERAIS

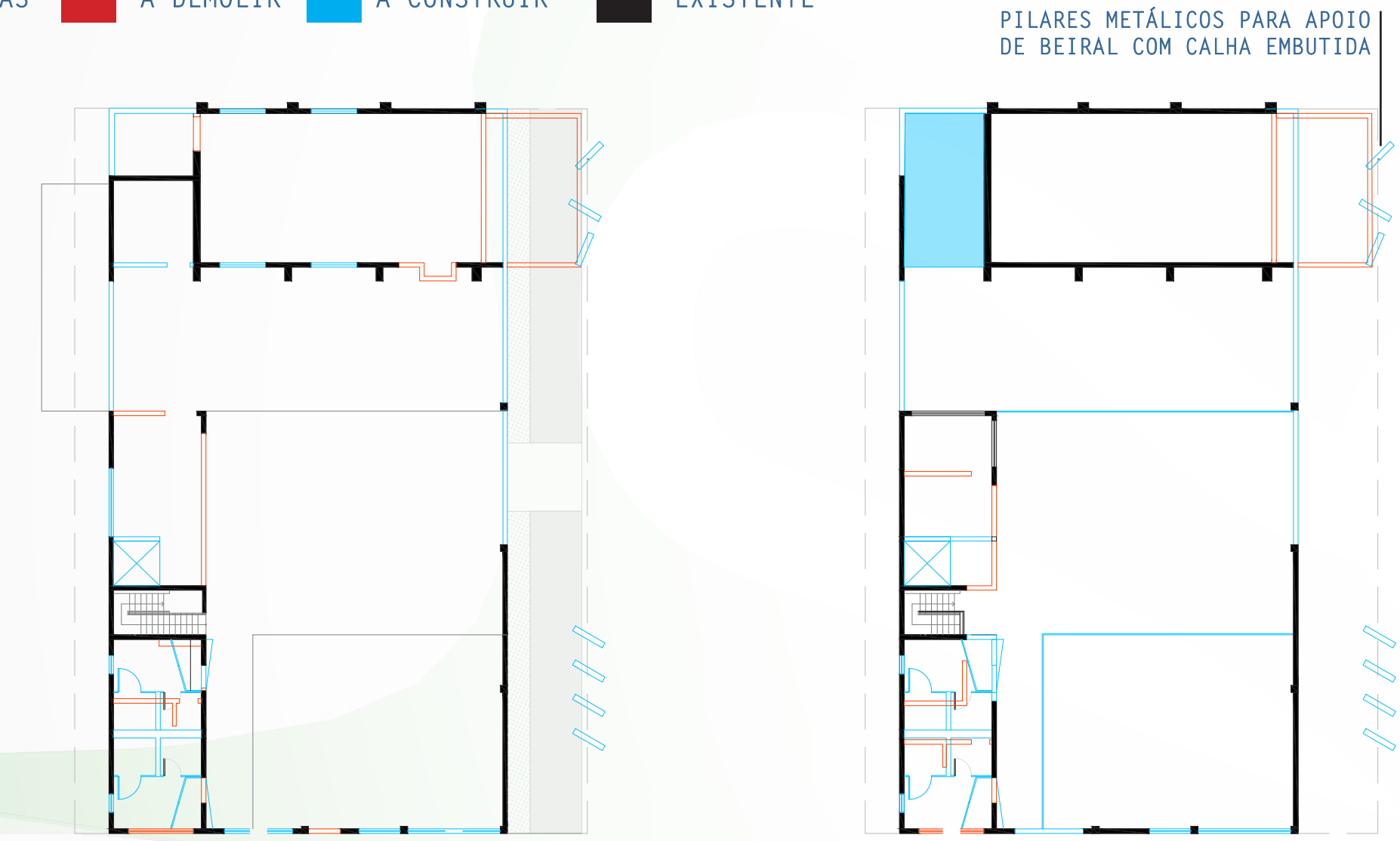


DIMENSÃO AMBIENTES

1	4,00 x 3,85 m
2	10,85 x 8,40 m
3	13,00 x 9,80 m
4	3,85 x 7,45 m
5	3,60 x 3,50 m
6	2,74 x 3,45 m
7	13,25 x 6,54 m
8	5,30 x 3,85 m
9	13,00 x 9,70 m

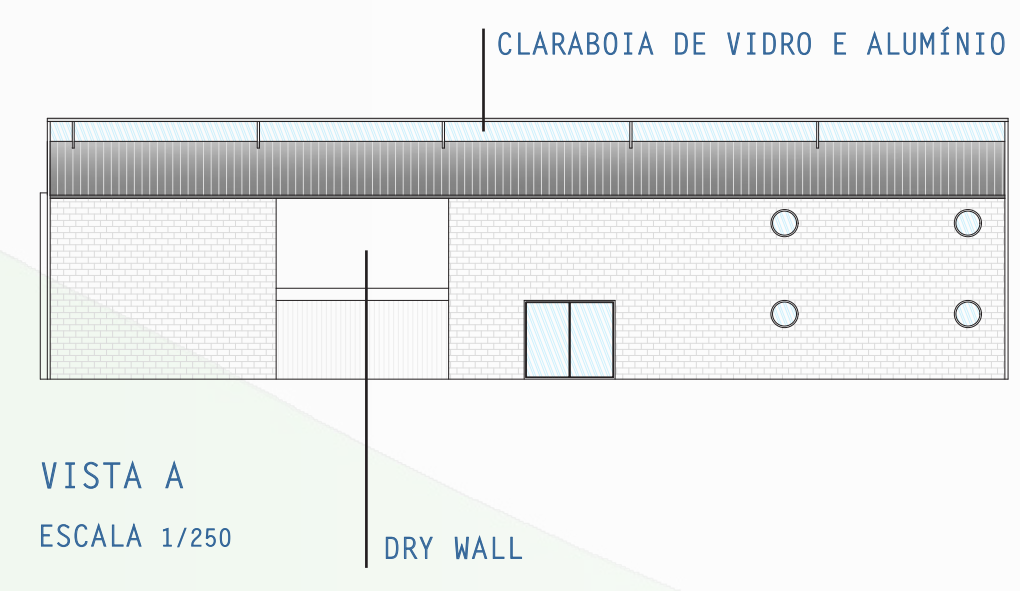
- LEGENDA
- 1 WC
 - 2 SALA DE EXPOSIÇÕES
 - 3 LOJA
 - 4 CAFÉ
 - 5 DML
 - 6 APOIO A SALA DE OFICINAS
 - 7 SALA DE OFICINAS
 - 8 BIBLIOTECA
 - 9 SALA DE AULA

PLANTAS ■ À DEMOLIR ■ À CONSTRUIR - ■ EXISTENTE

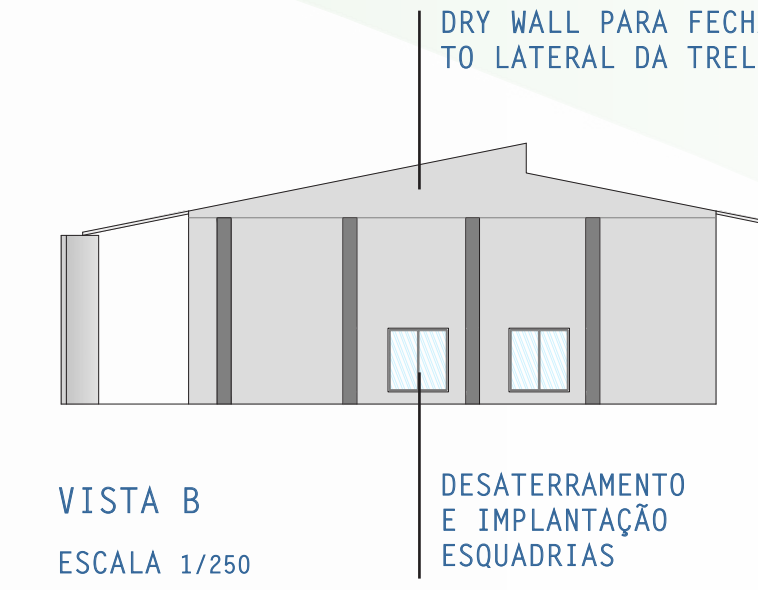


PAV. 1
ESCALA 1/250

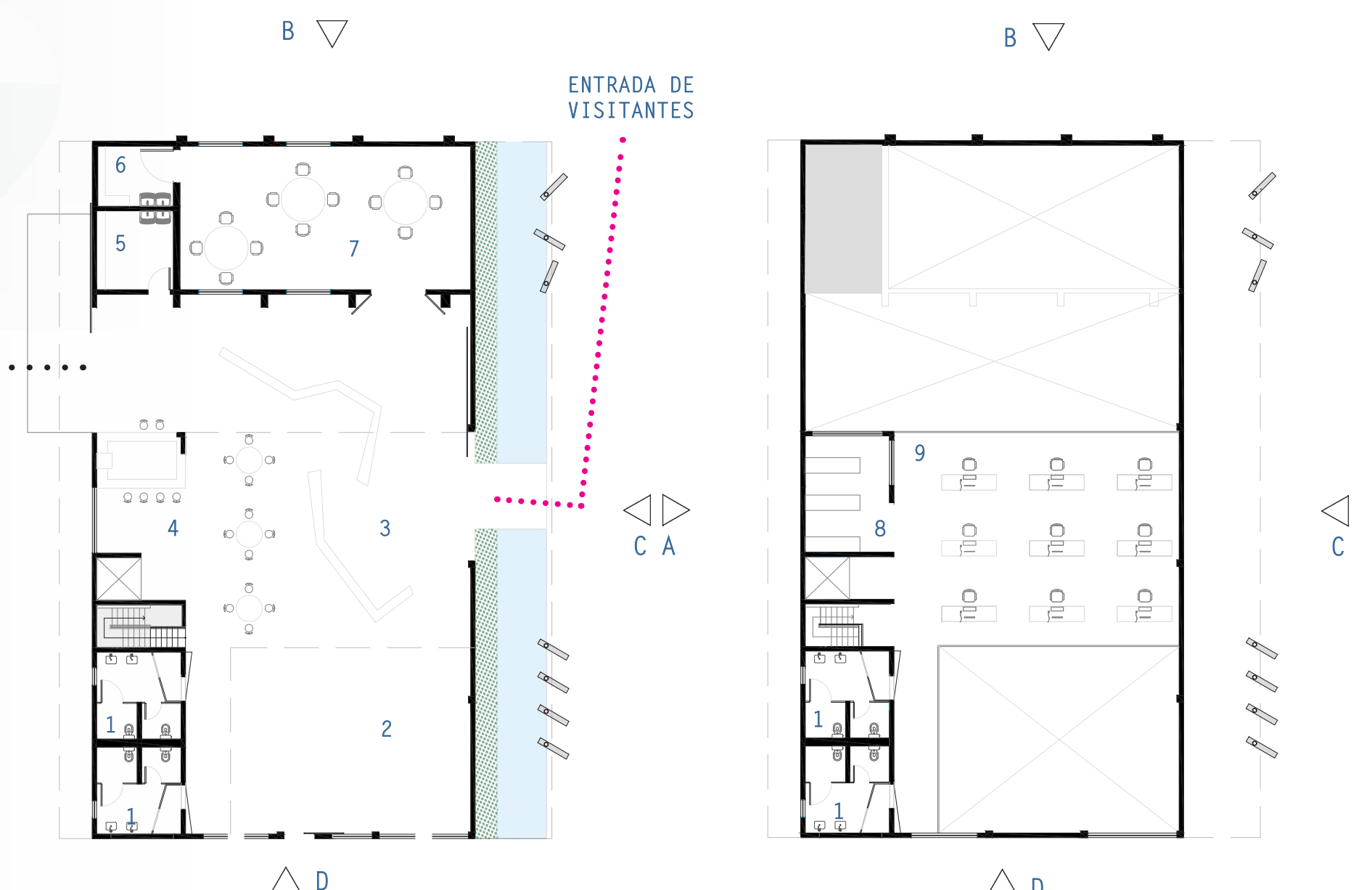
MEZANINO
ESCALA 1/250



VISTA A
ESCALA 1/250

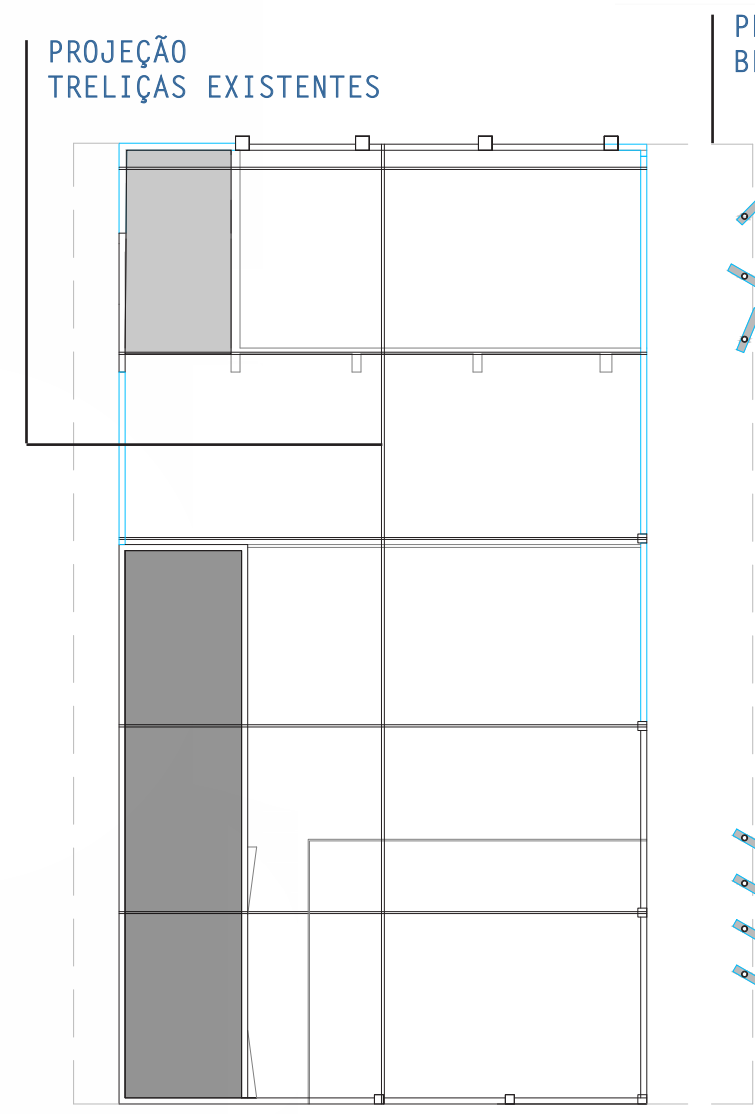


VISTA B
ESCALA 1/250

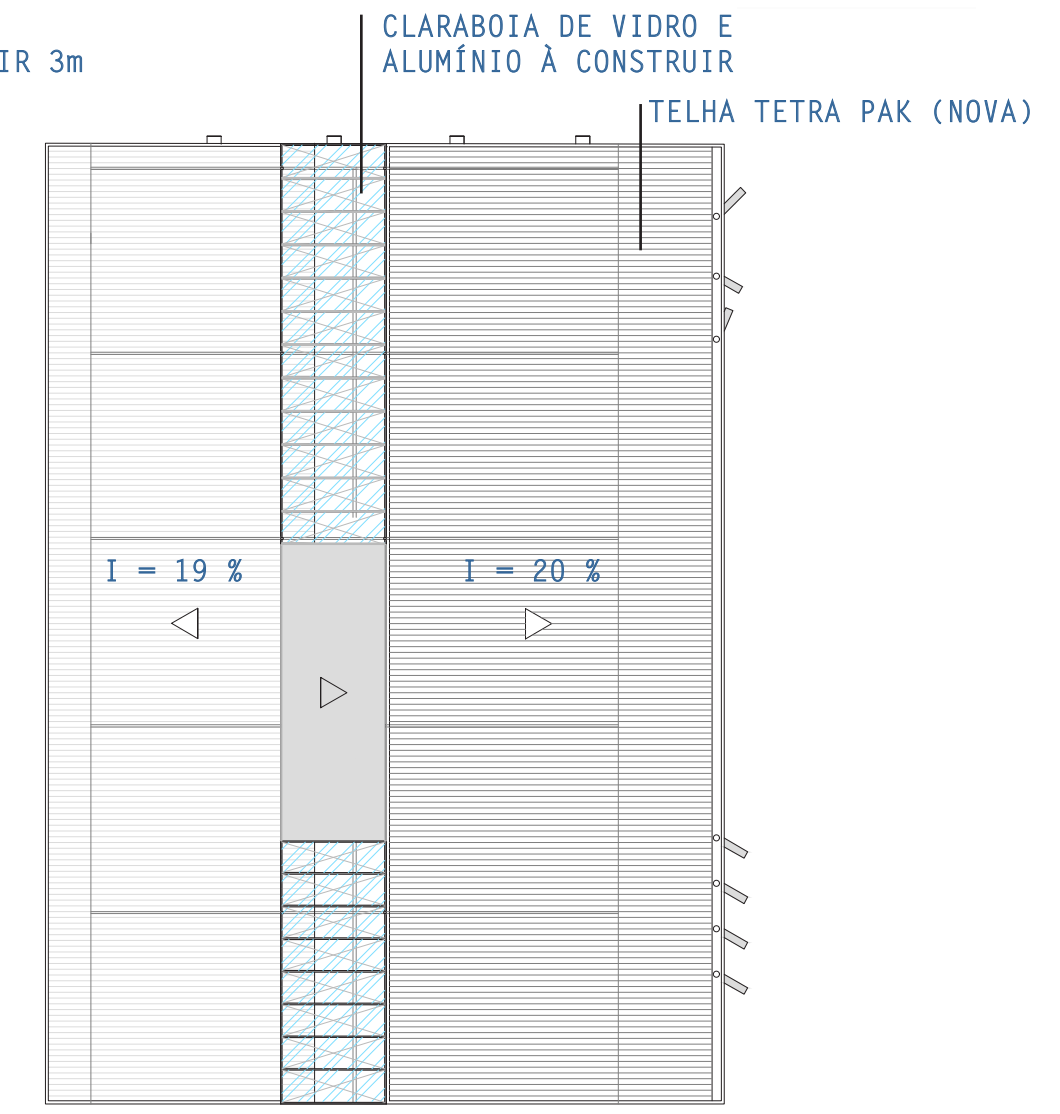


PLANTA LAYOUT PAV. 1
ESCALA 1/250

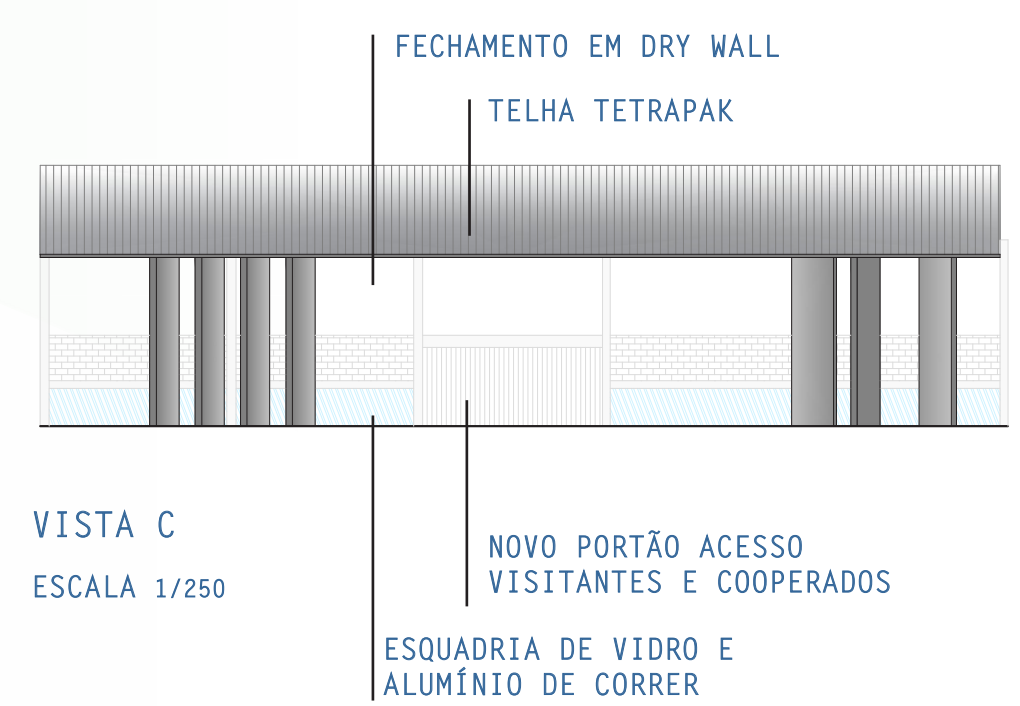
PLANTA LAYOUT MEZANINO
ESCALA 1/250



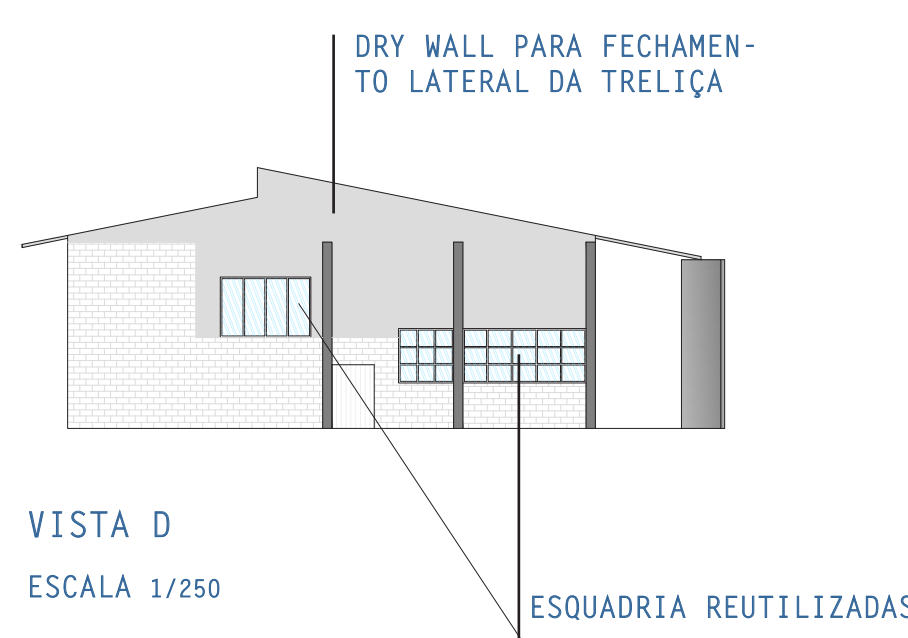
ESTRUTURA TELHADO
ESCALA 1/250



COBERTURA
ESCALA 1/250



VISTA C
ESCALA 1/250



VISTA D
ESCALA 1/250